

SPON



Hotels Audio System Solution



www.sponcomm.com

Address: No.70, Nantang Road, High-Tech Zone, Changsha, China.

Mobile: +86 138 7314 3517

Tel: +86 731 8557 0190

Email: Inquiry@Sponcomm.Com



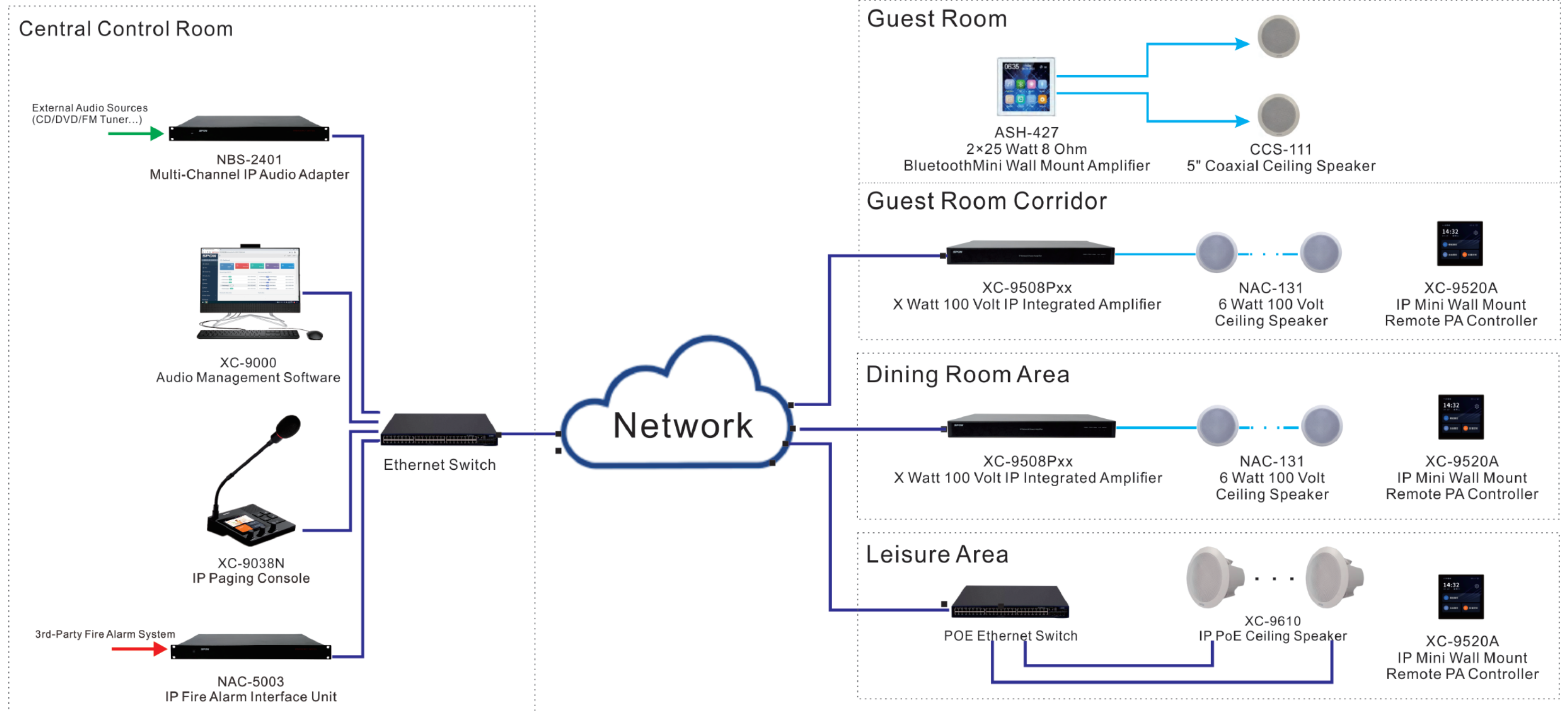
Enhanced BGM Atmosphere



Operational Voice Announcements



Emergency Voice Alerts



System Overview

Core Functions of a PA System in Hotels

▲ 1. Real-time Communication

- **Guest Rooms:** A tailored background music experience, complementing cozy lighting and top-notch room service, sets the tone for a memorable stay, allowing guests to truly unwind and relax.
- **Public Areas:** Crafting the right ambiance in hotel communal spaces like lobbies, dining rooms, lounges, and wellness areas with the right music ensures guests feel welcome and at ease throughout their stay.

▲ 2. Operational Voice Announcements

This system provides instant and real-time voice communication. Staffs can engage in quick voice conversations through intercom terminals, eliminating the delays and inconveniences of traditional phone or text communication. This enhances communication and collaboration efficiency.

▲ 3. Emergency Voice Alerts

In unforeseen situations like fires, earthquakes, or security threats, the paramount concern is safety. A well-integrated PA system, paired with a hotel's fire alarm system, ensures rapid dissemination of crucial evacuation instructions or safety guidelines. This not only ensures guests' and staff safety but can be a decisive factor in minimizing potential harm.

DIFFERENT TYPES OF HOTELS

Whether you're responsible for a boutique hotel or a chain of budget hotels, SPON® IP PA solution makes a noticeable improvement in your hospitality business.

We offer audio solution to improve your business, daily operations, security and guest experience within:



▪ Chain Hotels



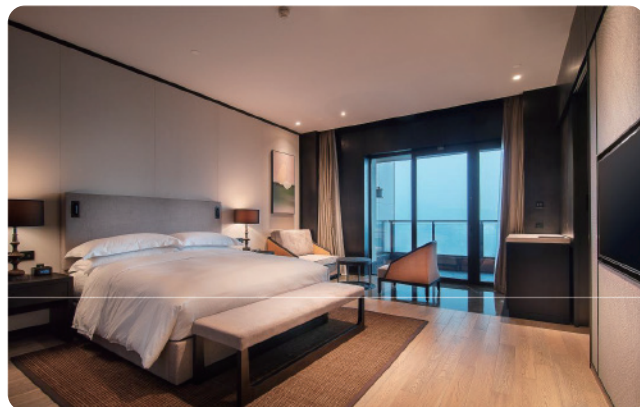
▪ Motels



▪ Resorts



▪ Boutique Hotels



▪ Extended-Stay Hotels



▪ Convention Center Hotel

APPLICATION SCENARIOS

Versatile Applications of SPON Audio System

▲ 1. SPON® Smart Home BGM for Hotel Guest Rooms



1.1. Integrated Experience

Complete with a high-definition touchscreen, Bluetooth, FM radio, and local music player, this solution offers a comprehensive audio experience.

1.2. Room-Filling Sound

Its built-in 8-ohm low-impedance amplifier connects seamlessly with 2 coaxial ceiling speakers, providing rich, immersive audio across the entire guest room.

1.3. User-Friendly

- Guests can:
- Play music directly from their smartphone via Bluetooth.
 - Tune into various FM radio stations for local flavor.
 - Use the micro SD card slot to enjoy their personal playlists.

1.4. Compact Design

As a wall-mounted unit, it complements the room's aesthetics without occupying unnecessary space.

1.5. Effortless Control

With intuitive controls, guests can easily customize their audio experience, be it adjusting the volume or switching between different music sources.

Incorporate the SPON® mini wall mount amplifier into your hotel rooms and offer guests an unparalleled, personalized audio experience.

▲ 2. Elevate Hotel Experience & Streamline Operations with SPON® IP PA System

The SPON® IP PA solution excels in enhancing guest experience, facilitating efficient staff-guest communication, and optimizing operational costs in the hospitality industry.



2.1. Ambiance Creation

Using SPON® IP amplifiers and passive analog speakers, hotel staff can easily set the mood in public areas with background music or adjust volume levels.

2.2. User-Friendly Controls

With the SPON® IP mini wall mount remote PA controller, areas such as the hotel lobby, dining room, lounge, gym, swimming pool, and corridors can be seamlessly controlled.

2.3. Streamlined Communication

Whether it's broadcasting a "lost and found" notice for guests or summoning staff to the manager's office, the SPON® IP paging console, positioned at the central control room or reception, ensures messages are conveyed promptly.

2.4. Versatile Features

The system boasts robust PA functionalities, including:

- User Authorization: Control who can access and manage the system.
- Device & Content Management: Organize and oversee all connected devices and media.
- Zone Management: Control audio settings in specific hotel areas.
- Scheduled Audio: Timed background music or voice messages.
- Priority Settings: Prioritize important PA tasks.
- Remote Adjustments: Modify volume from anywhere.
- System Monitoring: Keep tabs on system performance.

SPON®'s IP PA solution is tailor-made for hotels seeking to combine superior guest experience with operational efficiency.

▲ 3. Ensuring Safety with SPON® IP PA System in the Hospitality Sector

A hotel's primary obligation is the safety of its guests and staff. In situations of imminent danger, whether from natural disasters like fires and earthquakes or human-induced threats such as terrorist attacks, immediate communication is paramount.

The SPON® IP PA system plays a pivotal role in hotel safety:



3.1. Rapid Response

As a mandatory evacuation system in hotels, SPON®'s IP PA system is a first-responder, swiftly relaying critical information.

3.2. Integration with Safety Measures

In conjunction with the fire alarm system, the SPON® IP PA system broadcasts essential evacuation directions throughout the hotel, guiding guests and staff to safety and potentially saving lives.

3.3. Versatile Communication

Whether utilizing pre-set voice messages for common scenarios, making live announcements for real-time instructions, or combining both, the system offers comprehensive control in managing crises.

3.4. Complementary to Surveillance

While video surveillance offers visual insights, the SPON® IP PA system provides actionable directives, ensuring that both guests and staff not only see but also understand the immediate steps to take.

With the SPON® IP PA solution in place, hotels are better equipped to respond to emergencies, safeguarding their reputation and, most importantly, the lives of those within.

Audio Management Platform

XC-9000



KEY FEATURES

UNIFIED MANAGEMENT AND USER INTERFACE

- **B/S software architecture:** centralized management of all IP intercom and PA devices.
- **User-friendly web interface:** all critical system information displayed on the Dashboard.
- **Versatile Events:** Creation and scheduling of timed events, alarm events, and customizable event combinations.
- **Mobile app Management:** PA system management and user account management, including operation authority settings.

PA AND INTERCOM FLEXIBILITY

- **Various Task Form:** Supports multiple real-time PA tasks using server sound card, files, terminals, and speech synthesis.
- **Multiple Calling way:** User-defined call transfer, answer, and call priority settings.
- **Online Database:** Upload functionality for audio files and pre-recorded messages to the media library.
- **Seamless Compatibility:** Integration with third-party VOIP phones using SIP trunk for seamless VOIP system connection.

SYSTEM MONITORING AND INTEGRATION

- **Operation Log:** Call-log and event-log recording and inquiry features for efficient monitoring.
- **API Flexibility:** Standard HTTP API documentation to facilitate integration with other systems and third-party development.

NETWORK WM AUDIO TOUCH PANEL

XC-9520A



TECHNICAL PARAMETERS

Power Supply	AC 100V~240V 50/60Hz
Interface	1×RJ45 Ethernet Port、1×RS485 Port (Reserved)、2×AC Power Input Port
Network Chip Rate	10/100Mbps Self-adaptive
Dimensions	86x37.5x86mm
Weight	0.21kg
Network Protocol	TCP/IP、UDP、ARP、ICMP、IGMP

KEY FEATURES

SLEEK DESIGN & USER INTERFACE

- **Wall Box Compatibility:** Fits neatly into 86 type wall boxes.
- **High-Resolution Touchscreen:** 4-inch screen with a 480*480 display.

BROADCASTING AND MEDIA FEATURES

- **Remote Broadcast Control:** Manage tasks and adjust volume remotely.
- **Media Library Access:** Stream AOD Mp3 files directly from the SPON Management software XC-9000.
- **Manual Task Triggering:** Initiate AOD tasks on server XC-9000 as needed.

CONNECTIVITY AND NETWORK INTEGRATION

- **Remote Volume Management:** Adjust the volume of online terminals via server XC-9000.
- **RJ45 Port:** Ensures compatibility with Ethernet, cross-segment, and cross-router networks.

NETWORK INTEGRATED

AMPLIFIER

XC-9508



▲ TECHNICAL PARAMETERS

Power Supply	AC 100V-240V 50/60Hz
Network Protocol	SIP 2.0 (RFC 3261), FTP, HTTP, DHCP, TCP/IP, UDP, ARP, ICMP, IGMP
Audio Encoding	MP3/PCM/ADPCM/G711.a/G711.u/G729
Temperature & Humidity	-10 C ~ +50 C , ≤90%RH (No Frost)
Frequency Response	60Hz~18KHz
THD (Total Harmonic Distortion)	≤0.5% at 1kHz, 1/2 rated output
Speaker Output	70V/100V (Constant-Voltage)

▲ KEY FEATURES

DESIGN & AMPLIFICATION FEATURES

- - **Efficient 1U Rack Design:** Compact and robust, fitting seamlessly into various setups.
- - **Powerful Class-D Amplifier:** 130W digital amplifier, optimized for 100V loudspeakers.
- - **Maintenance Indicators:** Front panel equipped with multiple status lights for ease of maintenance.

SAFETY & STORAGE CAPABILITIES

- - **Advanced Protection Circuit:** Shields against overload, overheating, and lightning.
- - **Enhanced Storage:** Large capacity for storing and updating tasks and alarm files remotely.

CONNECTIVITY & SYSTEM INTEGRATION

- - **VoIP System Compatibility:** Supports SIP protocol for seamless integration with systems like Yeastar, Asterisk, and Cisco.
- - **Independent Offline Broadcasting:** Capable of functioning without a server.
- - **Voice Announcement Reception:** Compatible with live announcements from third-party VoIP and SPON management software.
- - **Fire Alarm System Connection:** Includes Relay I/O port for integration with external fire alarm systems.

NETWORK CEILING

SPEAKER

XC-9610



▲ TECHNICAL PARAMETERS

Power Supply	DC 24V/1A or PoE (IEEE802.3af)
Network Protocol	SIP 2.0 (RFC 3261), FTP, HTTP, TCP/IP, UDP, ARP, ICMP, IGMP
Audio Encoding	MP3/PCM/ADPCM/G711.a/G711.u/G729
Power Consumption	≤25W
Maximum SPL	97dB±3dB
Interface	1×RJ45 Ethernet Port, 1×Power Input

▲ KEY FEATURES

PERFORMANCE AND ENCODING

- - **High-Speed Processing:** Employs a high-speed, industrial-grade dual-core (ARM+DSP) chip for superior processing power.
- - **Clear Voice Encoding:** Features versatile voice encoding with both narrowband (G.711a/u) and broadband (G.722) options for crystal-clear voice paging.

CONNECTIVITY & SYSTEM INTEGRATION

- - **SIP Phone Paging Support:** Supports receiving paging from SIP phones through 10 dedicated multicast addresses.
- - **Efficient Multicast Scalability:** Incorporates a multicast scalable function, efficiently saving SIP account resources.
- - **SIP Protocol Integration:** Fully compatible with standard SIP protocols for seamless integration with leading SIP PBX systems like Yeastar, Asterisk, and Cisco.

AUDIO MANAGEMENT & NETWORK FUNCTIONALITY

- - **Versatile Audio Functions:** Facilitates background music, emergency paging, and alarm signals from the SPON management system.
- - **Adaptive Volume Control:** Features dynamic volume control that automatically adjusts based on ambient noise.
- - **Flexible Network Power Options:** Offers flexible deployment with PoE or PoE+ interface support.

NETWORK VIDEO INTERCOM MASTER STATION XC-9037NV



▲ TECHNICAL PARAMETERS

Power Supply	DC 12V/1.5A
Camera	2MP
Video Codec	VGA/720/1080
S/N (Signal-to-Noise) Ratio	≥82dB
Audio Sampling & Bit Rate	8kHz-44.1kHz, 16bit, 8kbps-320kbps
Frequency Response	40Hz-18kHz
Network Protocol	SIP (RFC 3261), HTTP, TCP/IP, UDP, ARP, ICMP, IGMP
Configuration Method	Local Settings/Web Page
Mounting Method	Desktop
Interface	1×RJ45 Ethernet Port, 1×USB 2.0, 1×Line Input, 1×Line Output, 1×Relay Input, 1×Relay Output

▲ KEY FEATURES

INTERACTIVE DISPLAY AND CAMERA FEATURES

- – **7-Inch Touchscreen:** User-Friendly Interface For Easy Interaction.
- – **200W HD Camera:** Equipped With Physical Privacy Protection.

COMMUNICATION TECHNOLOGIES

- – **Full-Duplex Visual Intercom:** Enables Effective Two-Way Visual Communication.
- – **Noise Reduction Algorithm:** Enhances Audio Quality For Clearer Communication.
- – **Remote Monitoring Capabilities:** Ability To Check The Status Of The Terminals, Including Login And Intercom Status.

BROADCASTING AND CUSTOMIZATION

- – **Flexible Broadcasting Options:** Supports Broadcasts To All Areas, Specific Zones, Or Individual Terminals.
- – **Multiple Broadcast Formats:** Including Audio Files, Pre-Recorded Messages, And TTS Options.
- – **Emergency Broadcast System:** One-Touch PA Across All Terminals.
- – **Customizable Ring Tones:** Personalize Ringtones For Calls And Broadcasts.

NETWORK HORN SPEAKER XC-9615



▲ TECHNICAL PARAMETERS

Power Supply	DC 24V/2.7A or PoE (IEEE802.3af)
Power Consumption	≤65W
Rated Power Output	30W(at DC 24V/2.7A powered) 22W (at PoE+ powered) 15W (at PoE powered)
Network Protocol	SIP 2.0 (RFC 3261), FTP, HTTP, TCP/IP, UDP, ARP, ICMP, IGMP
Maximum SPL	97dB±3dB
S/N (Signal-to-Noise) Ratio	≥80dB
Audio Encoding	MP3/PCM/ADPCM/G711.a/G711.u/G729
Frequency Response	100Hz-18kHz
Interface	1×RJ45 Ethernet Port, 1×Power Input
IP Rating	IP65

▲ KEY FEATURES

CONNECTIVITY & SYSTEM INTEGRATION

- – **Multicast Addresses:** 10 Multicast Addresses For Paging From SIP Phones.
- – **Server Efficiency:** Multicast Scalability Saves SIP Account Resources.
- – **SIP Compatibility:** Standard SIP Protocol For Easy Integration With Yeastar, Asterisk, Cisco.
- – **Onvif Compatibility:** Onvif Protocol Compatible For Third-Party Monitoring System Integration.

AUDIO MANAGEMENT & NETWORK FUNCTIONALITY

- – **Content Management:** Manages Background Music, Emergency Pages, And Alarms From SPON.
- – **Adaptive Volume:** Dynamic Volume Control Adapts To Ambient Noise.
- – **Power Option:** PoE/PoE+ Support For Versatile Installation.
- – **Remote Management:** Remote Management And Online Upgrades.
- – **Two-Way Intercom:** Two-Way Communication With SIP Telephones/Intercoms.

NETWORK WALL-MOUNTED SPEAKER XC-9607



▲ TECHNICAL PARAMETERS

Power Supply	DC 24V/1A or PoE (IEEE802.3af)
Rated Power Output	20W (at DC 24V/1A powered) 15W (at PoE powered)
Network Protocol	TCP/IP, UDP, ARP, ICMP, IGMP
Maximum SPL	97dB±3dB
Frequency Response	100Hz-18kHz
Operating Temperature, Humidity	-20°C to 50°C, 10% to 90% RH (non-condensing)

▲ KEY FEATURES

PERFORMANCE AND ENCODING

- - **High-Speed Processing:** Employs a high-speed, industrial-grade dual-core (ARM+DSP) chip for superior processing power.
- - **Clear Voice Encoding:** Features versatile voice encoding with both narrowband (G.711a/u) and broadband (G.722) options for crystal-clear voice paging.

CONNECTIVITY & SYSTEM INTEGRATION

- - **SIP Phone Paging Support:** Supports receiving paging from SIP phones through 10 dedicated multicast addresses.
- - **Efficient Multicast Scalability:** Incorporates a multicast scalable function, efficiently saving SIP account resources.
- - **SIP Protocol Integration:** Fully compatible with standard SIP protocols for seamless integration with leading SIP PBX systems like Yeastar, Asterisk, and Cisco.

AUDIO MANAGEMENT & NETWORK FUNCTIONALITY

- - **Versatile Audio Functions:** Facilitates background music, emergency paging, and alarm signals from the SPON management system.
- - **Flexible Network Power Options:** Offers flexible deployment with PoE or PoE+ interface support.
- - **Remote Management:** Equipped with remote management and online upgrading capabilities for ongoing system optimization.

ANALOG CEILING SPEAKER NAC-131



▲ TECHNICAL PARAMETERS

Speaker Unit	1×6" Paper Cone Full Range Speaker
Rated Power Output	3W/6W
Input Voltage	100V
Sensitivity	93dB±3dB
Frequency Response	100-15KHZ
Ceiling Cut-out	Φ170mm
Dimensions	Φ188×76mm

▲ KEY FEATURES

QUALITY SOUND AND EASY INSTALLATION

- - **Material:** Features composite speaker cones for clear, pleasing sound quality.
- - **Design:** Strong and convenient active clip design for easy installation.
- - **Durability:** Enhanced with a composite suspension edge and damping treatment to extend the speaker's lifespan.
- - **Application:** Specifically designed for ceiling mounting.

EFFICIENT POWER CONNECTION

- - **Direct Amplifier Link:** Connects directly to a power amplifier's 100V line output.
- - **Versatile Power Options:** The 100V transformer on the speaker allows for easy power selection via primary winding connection terminals.